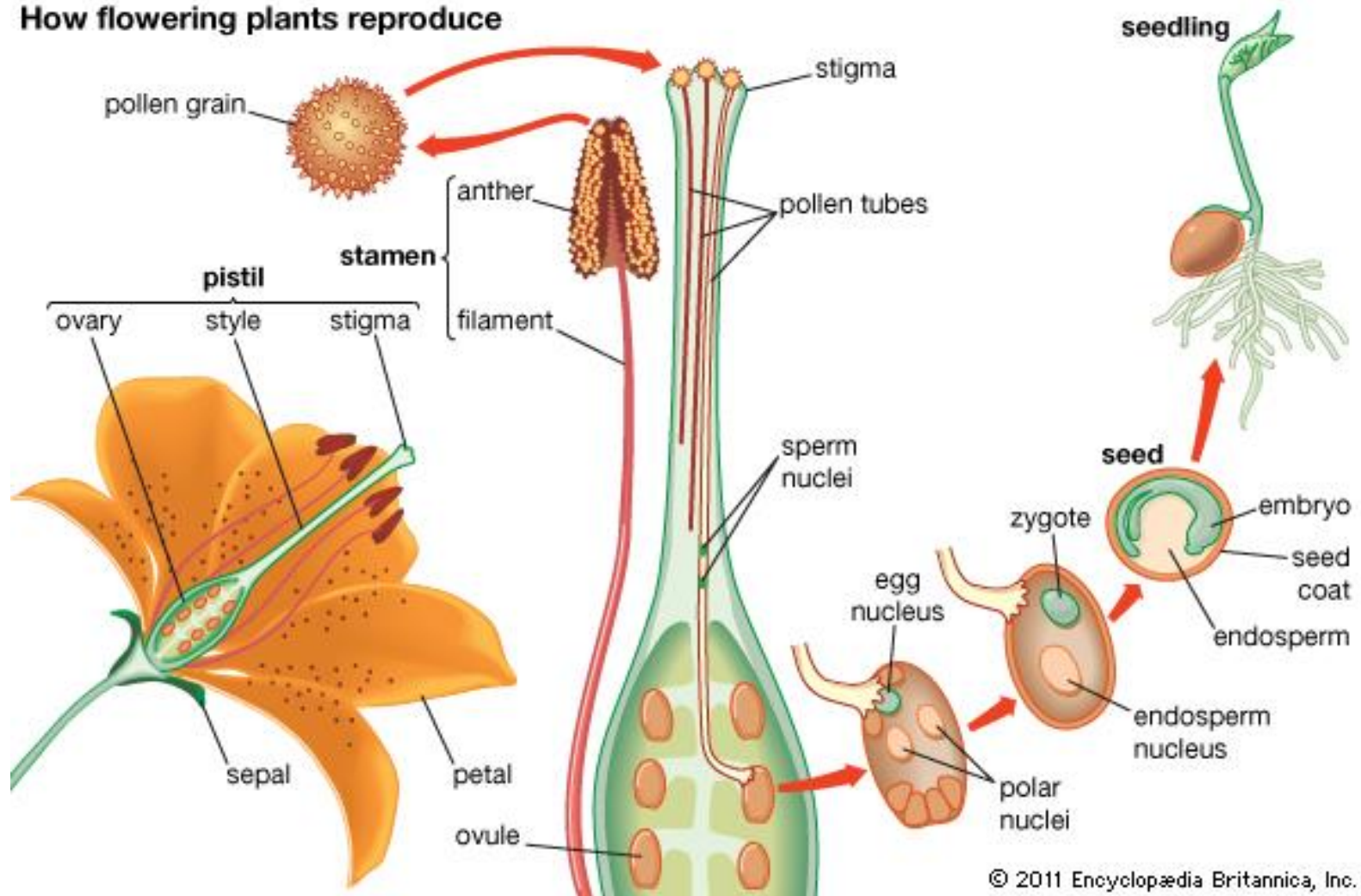
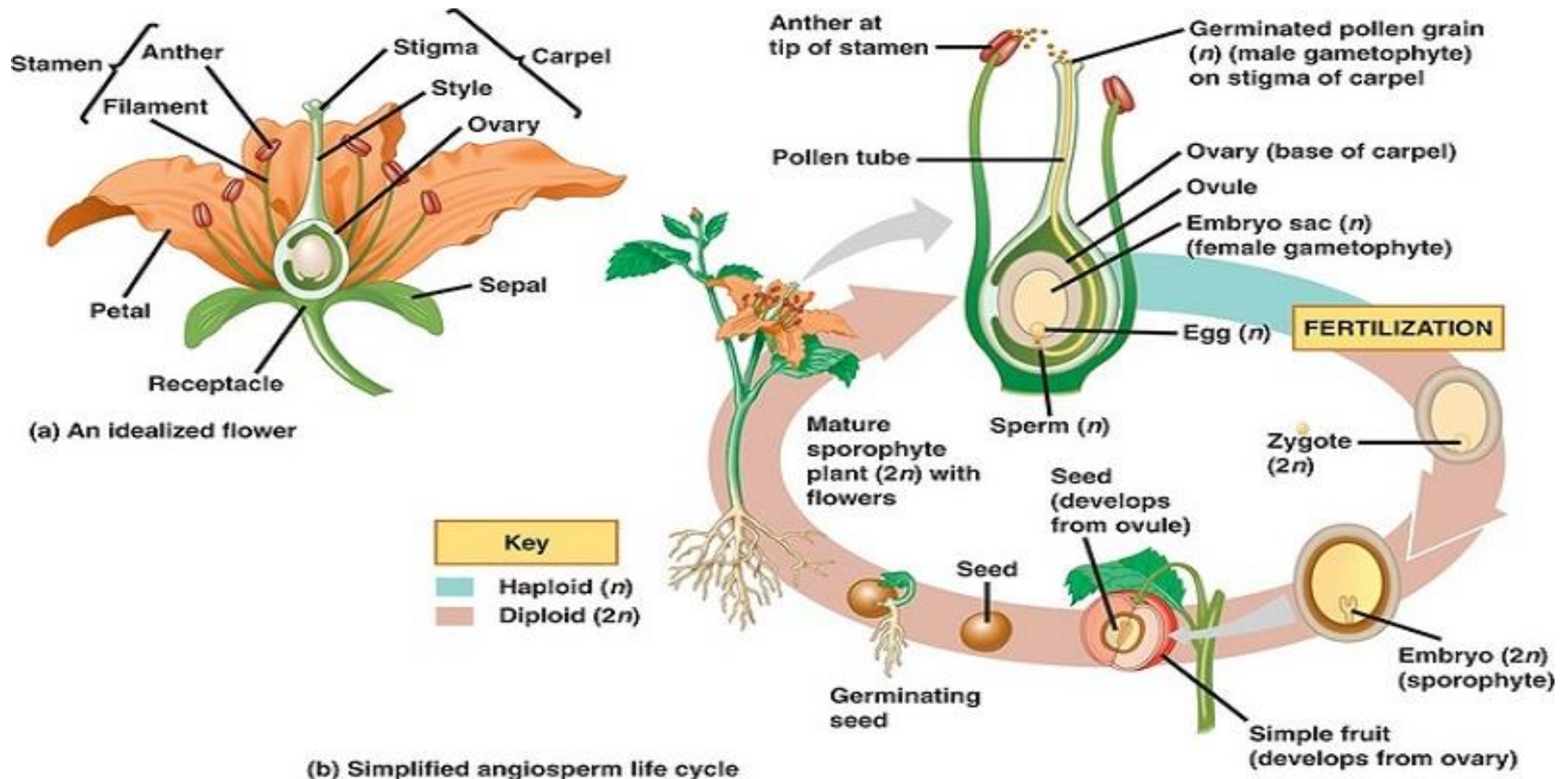


Birds N Bees of Plants

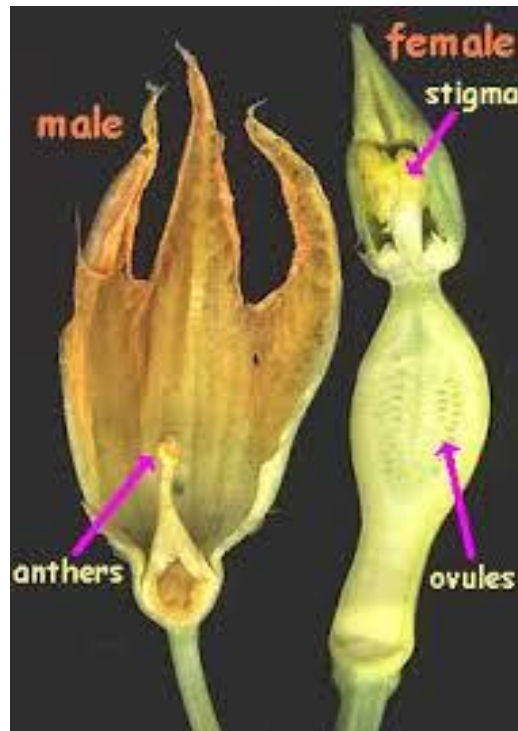
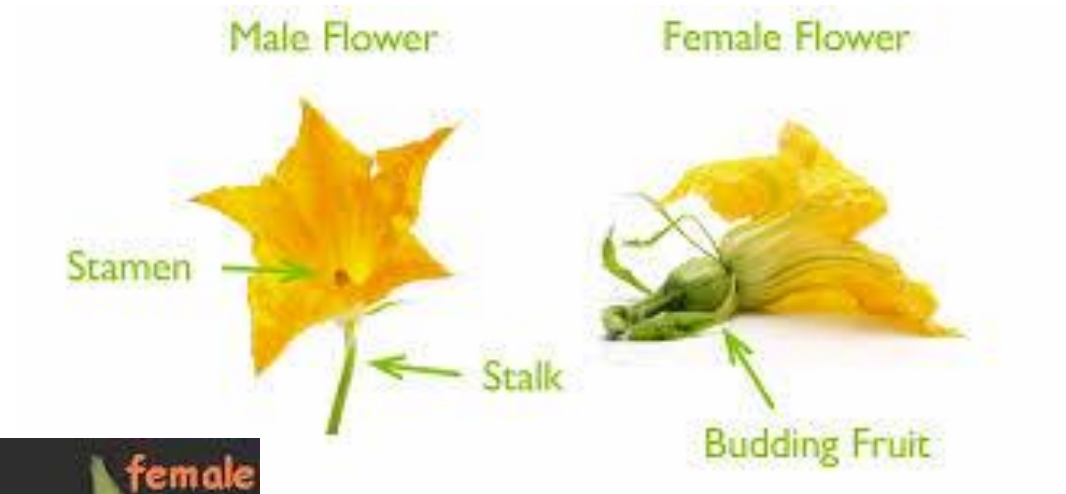
How flowering plants reproduce



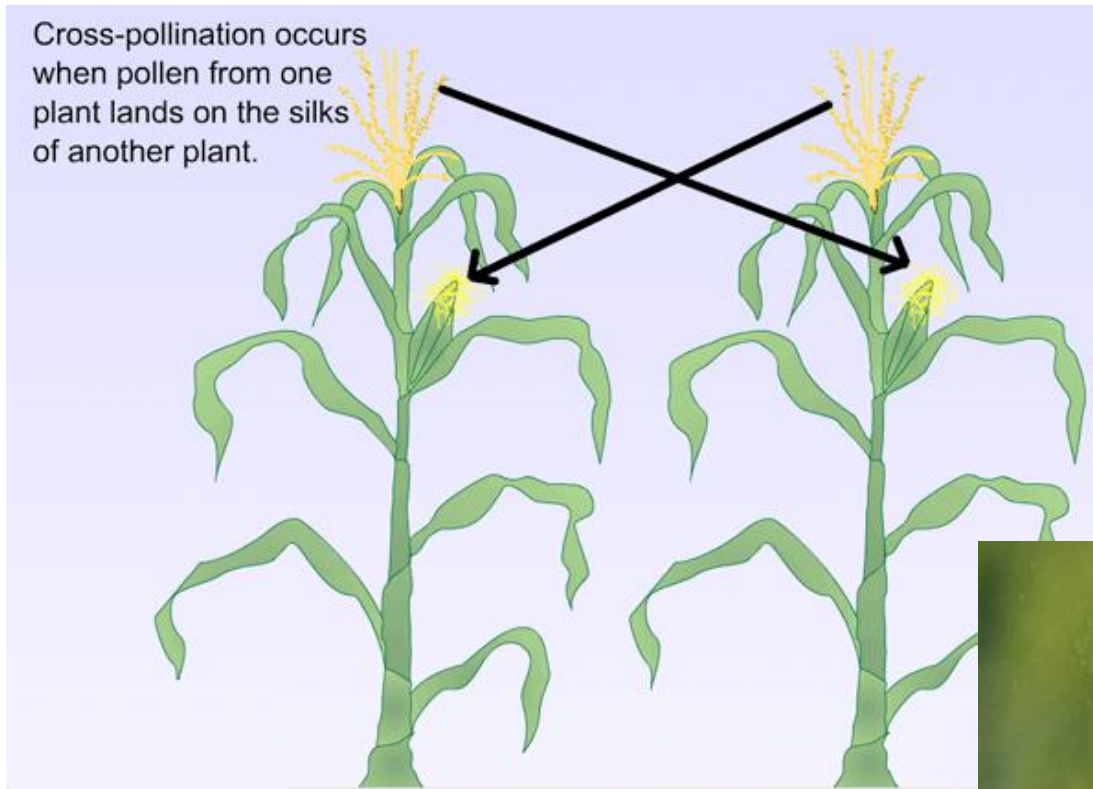
Birds N Bees of Plants



What is Pollination?

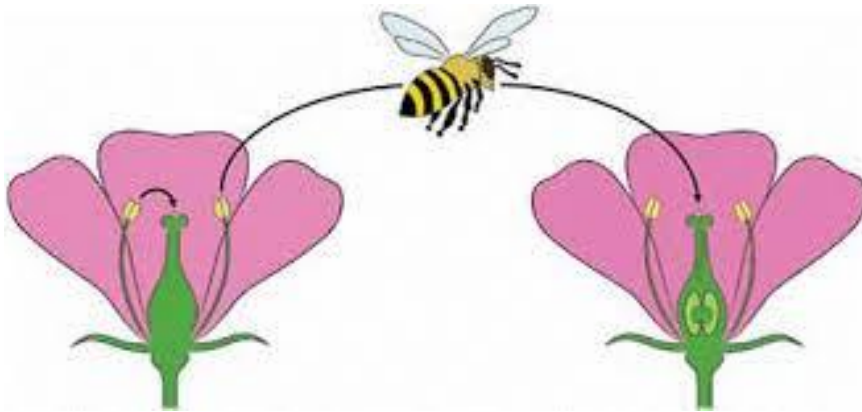


Pollination: Wind



Most likely to cross-pollinate:
Corn
Beet, Spinach, Orach

Pollination: Insect



Most likely to cross-pollinate:

Squash, Cucumbers

Melons, Pumpkins

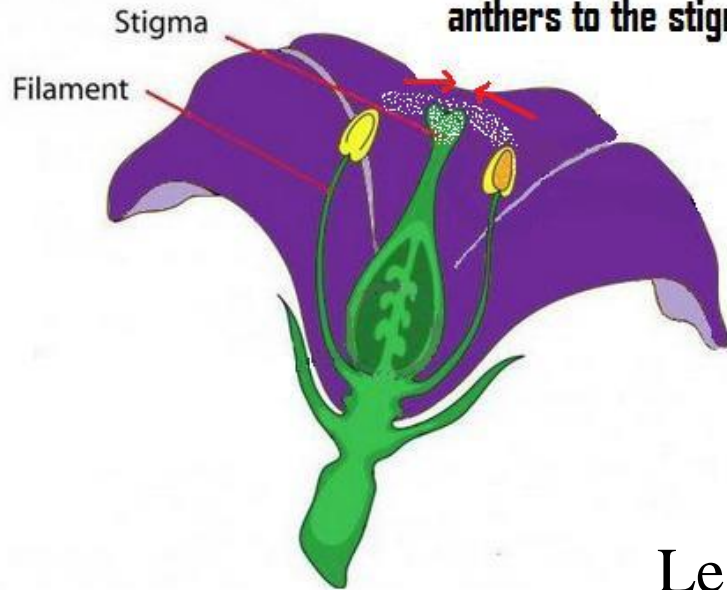
Winter Squash

Kale, Cabbage, Kohlrabi, Cauliflower

Radish, Turnip

Pollination: Self

Pea plant self pollinates when pollen is transferred from the anthers to the stigma



Least likely to cross-pollinate:
Tomatoes
Peas, Beans
Peppers, Eggplant

Techniques to prevent or control Cross-Pollination

- Isolate desired plant population with distance
- Netting and bagging are options
- Hand-pollination gives you control



Intentional Cross-Pollination

Hybrid: The result of cross-pollination between two varieties of the same genus and species.



Butternut + Cushaw = Hybrid

Open-Pollinated: Plants produced by pollination between two or more genetically similar parents of the same species and variety.

Heirlooms are simply very old open-pollinated varieties.



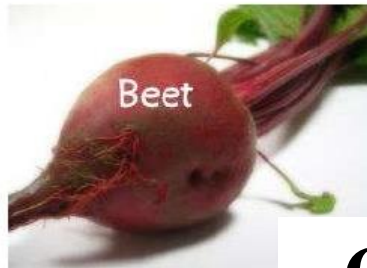
Butternut + Butternut = Butternut



Swiss chard



Spinach



Beet



Spinach
Amaranthaceae

Common Vegetable Families



Beans

"GRAIN LEGUMES"



Lentils



Peanut



Soybean



Peas



Legume
Fabaceae



Clover

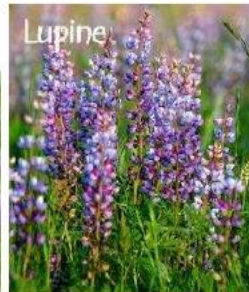


Alfalfa



Vetch

"FORAGE LEGUMES"



Lupine



Iceberg lettuce



Romaine



Lettuce
Lactuca sativa



Leaf lettuce



choi



Broccoli



Mustard
Brassicaceae



Brassica (cabbage or cole crops)



Brussels
Sprouts



Cabbage



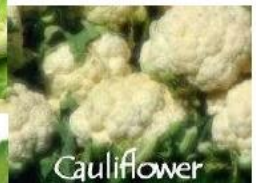
Turnip



Kohlrabi



Radish



Cauliflower



Parsnip



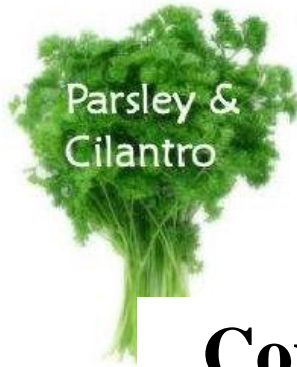
Carrot



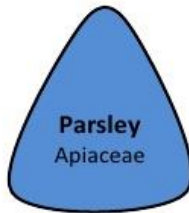
Celery



Dill



Parsley & Cilantro



Parsley
Apiaceae



Garlic



Leeks



Chives



Onions



Onion
Alliaceae

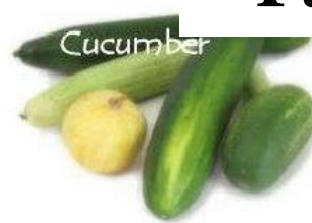
Common Vegetable Families



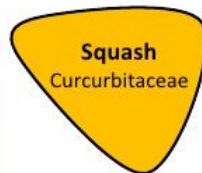
Pumpkin
(winter
squash)



Summer squash
Zucchini



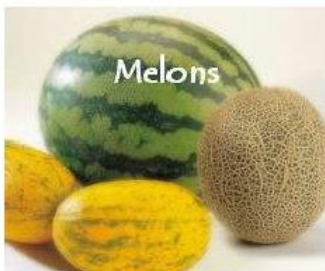
Cucumber



Squash
Curcurbitaceae



Winter squash



Melons



Pepper



Nightshade
Solanaceae



Chili pepper



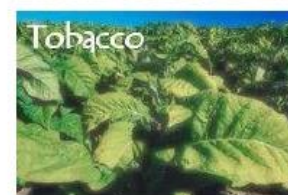
Potato



Tomato



Eggplant



Tobacco



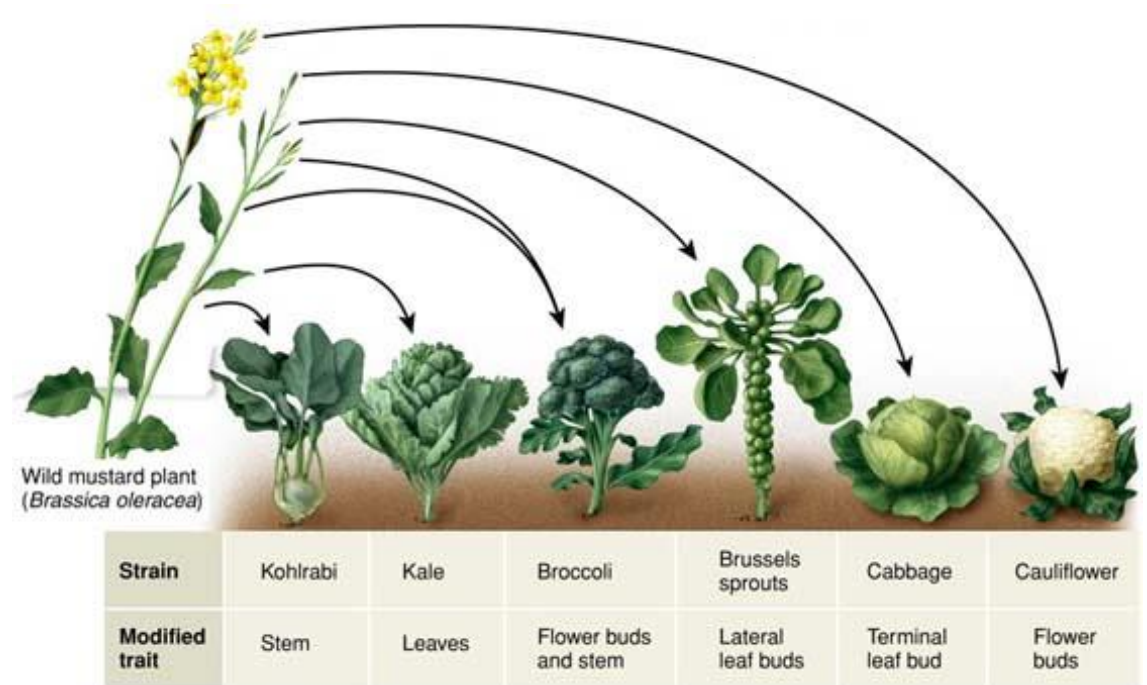
Petunia



Belladonna

Learn More

- Learn the details of seed saving from books at your local library
- Select for traits you want
- Learn some latin; what crosses with what?



Learn More

- Cold stratification, heat treatments, scarification
- You can bring in biennials for the winter

